



TRASH-FREE MYSTIC CHALLENGE

October 22nd—29th

Most of the trash in the ocean comes from rivers--and the trash in rivers comes from our streets.

Each time it rains trash takes an unexpected journey from the side of the road into our waterways, as part of [stormwater pollution](#). Stormwater (rain) washes everything on the streets into our stormwater system, which releases--you guessed it--into our rivers. By removing litter from parks and paths you are reducing the amount of trash that ends up in the water (think: saving ducks, turtles, whales from eating or getting caught in trash!)

Want to help? You're invited to MyRWA's autumn cleanup challenge taking place October 22nd-29th.

1. Clean up at the MyRWA priority locations (mapped below) or in your own neighborhood.
2. Report back using our [simple collection form](#).
3. Share before and after photos or video on social media using the hashtag #TrashFreeMystic. You can also email photos to erica.wood@mysticriver.org.

The person who picks up the most trash will win a *secret* MyRWA prize. Please follow recommended safety guidelines below. Have questions or need tech assistance? Reach out to Erica Wood, Communications and Outreach Manager, at erica.wood@mysticriver.org.

LOCATION	PARKING ADDRESS	WHAT TO EXPECT	HIGH-TRASH AREAS
Mary O'Malley State Park / Google Map	Commandants Way, Chelsea	Expansive park in Chelsea behind an apartment complex. Very open park with water views.	Along the stone wall on the shoreline; near the fishing pier
Draw Seven State Park / Google Map	Noonan Place, Somerville (Behind Assembly Row)	Urban vibe behind Assembly Row and the MBTA orange line.	Along the MBTA fence line or on the shoreline
Macdonald Park / Google Map	4253 Mystic Valley Parkway, Medford	Expansive park with lots of trees and river views; newly paved paths. You can find the park map at the parking lot entrance.	Along route 16 approaching the bridge by Wegmans + The overlook with the granite wall (close to

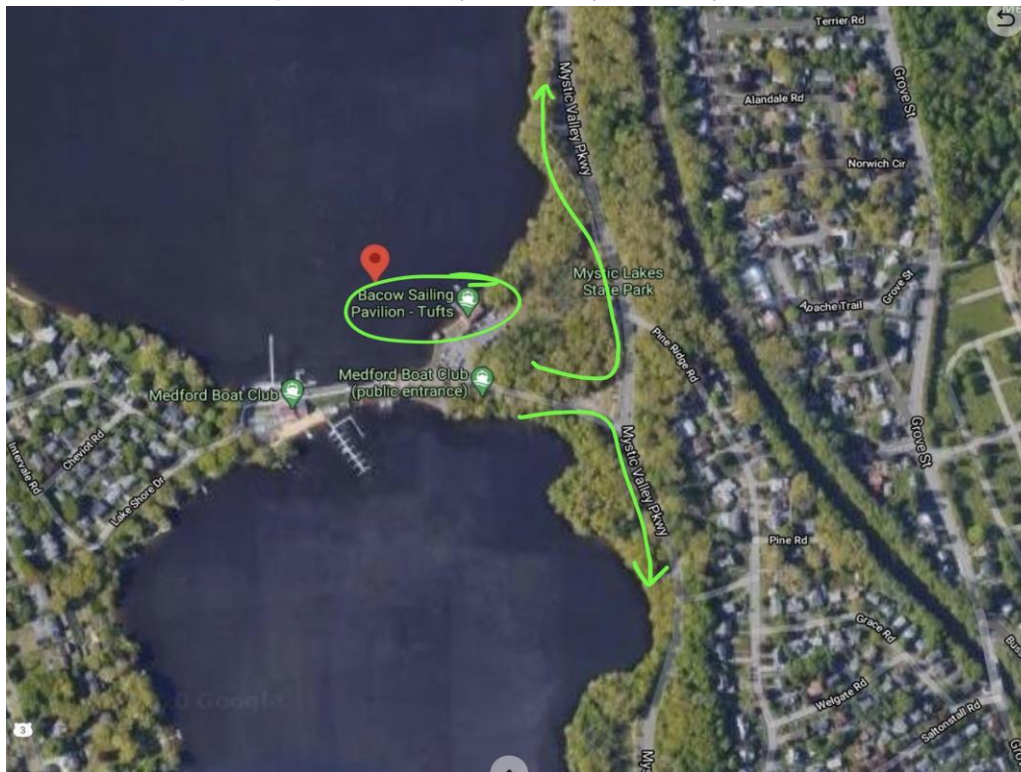
			the musical fence) collects significant trash (a rake could be helpful for that spot).
Horn Pond / Google Map	Park at the boat launch. 93 Lake Ave, Woburn	A trail goes around the entire pond. The entire trail is paved. Half of the loop is heavily wooded.	Trash is scattered throughout trails and sidewalk.
Mystic Lakes / Google Map	Park at the Tufts Sailing Pavilion at the Mystic Lakes Dam. 481 Mystic Valley Parkway, Medford	Proceed in either direction on the dirt paths along Mystic Valley parkway.	Trash will be located between the shoreline and Mystic Valley Parkway- you will see many "desire lines" where people have made their way to the shoreline
Medford Whole Foods (Auburn St.) / Google Map	Park at Whole Foods (2151 Mystic Valley Parkway)	This path is along a residential street near a busy Whole Foods. The path takes you to a large field along the river.	On dirt path along the river/Auburn St, across from Whole Foods
Blessing of the Bay Park / Google Map	32 Shore Drive, Somerville	This newly paved path takes you from Blessing of the Bay park along 93, to route 16. You'll see the river the whole time.	Trash is along this path, mostly on the highway side. Do not cross the fence to pick up trash.

Maps & safety guidelines are on the following pages:

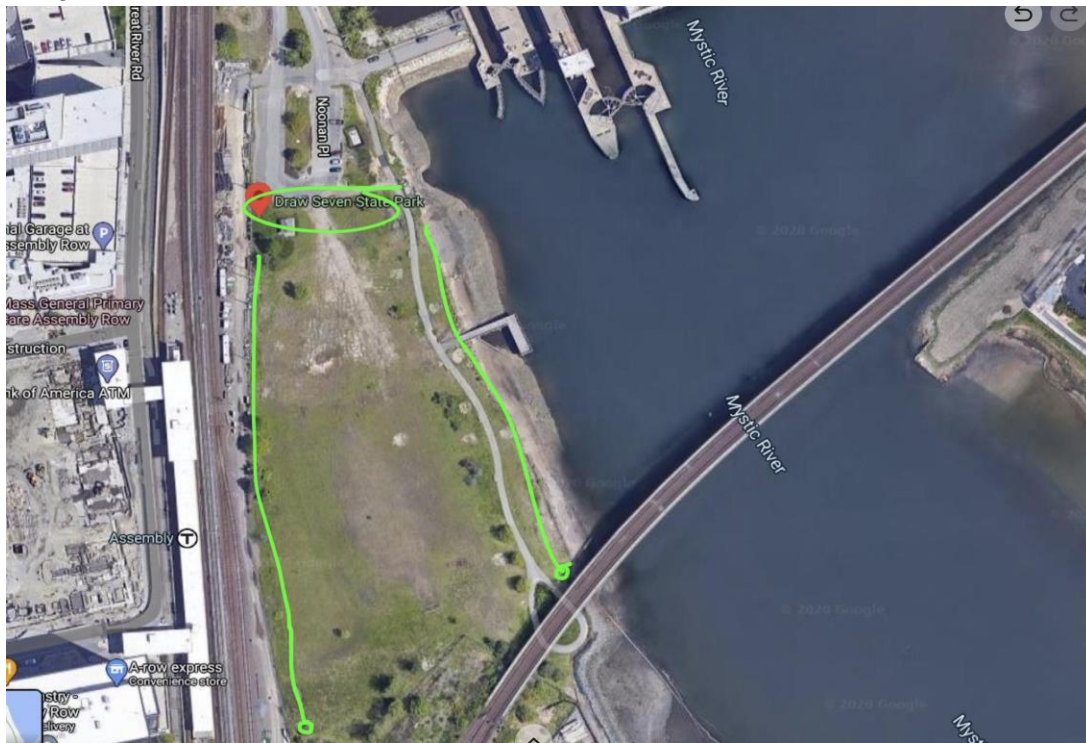
Blessing of the Bay. Begin at the park and walk the path until you reach Route 16 (Mystic Valley Parkway).



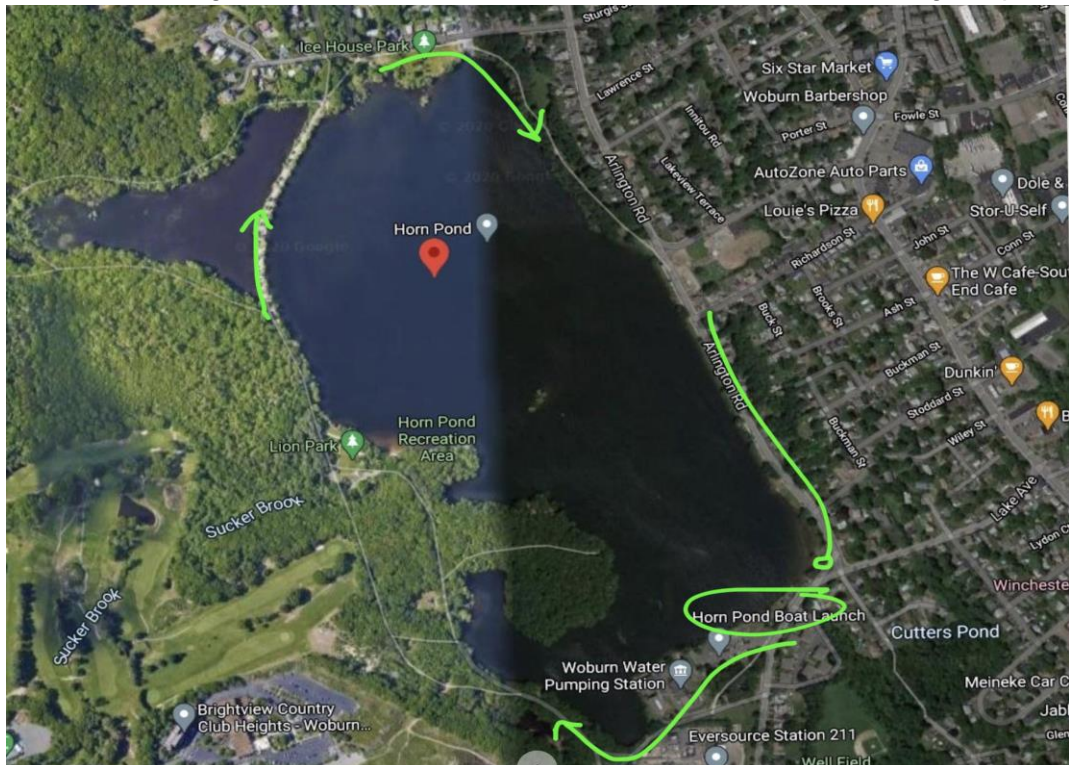
Mystic Lakes. Start at the Mystic Lakes Dam parking lot (best address = Tufts Sailing pavillion) and walk the paths up and down Mystic Valley Parkway.



Draw Seven State Park. Seek trash along the fence line and shoreline until you reach the bridge.



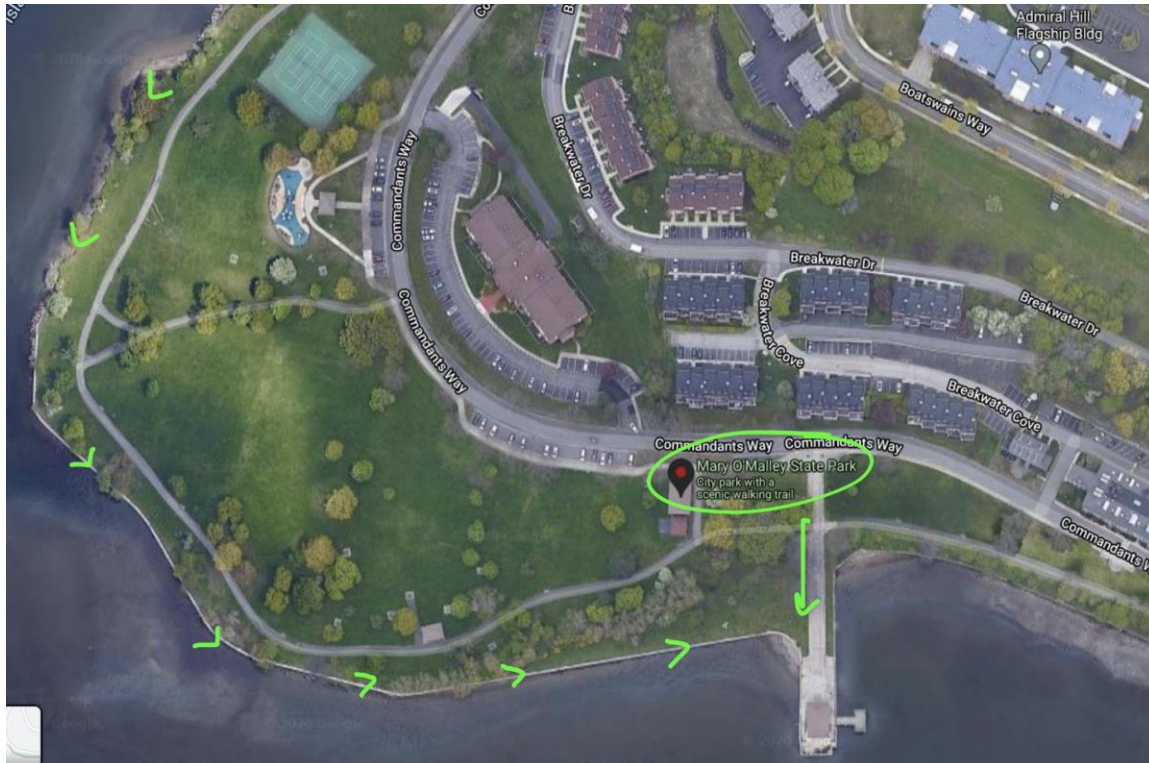
Horn Pond. Begin at the Horn Pond boat launch and walk the trail along the perimeter.



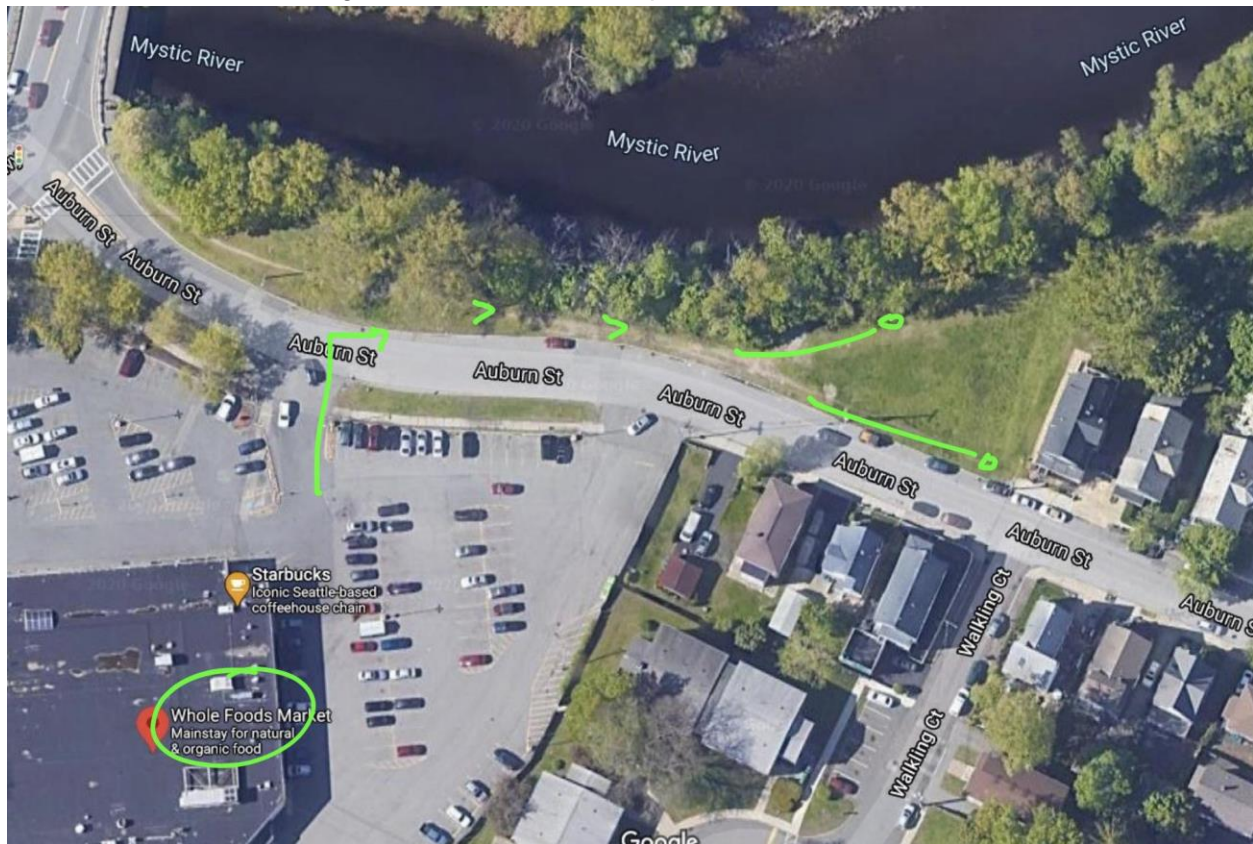
Macdonald Park. Park at the Mystic Valley Parkway parking lot and walk through the park. Trash is found at the overlook on the water and approaching the Rt 16 bridge, by Wegmans. Both sites are circled below.



Mary O'Malley State Park. Park along Commandants Way. Follow the stone wall along the shoreline or go to the fishing pier to find trash.



Auburn St. by Medford Whole Foods. Park at Whole Foods and walk directly across the street. There is trash along the street and the dirt paths.



Safety Guidelines:

Please read through safety recommendations before going to a site--either individually or with a physically-distancing group. Safety guidelines can be found on the [Trash-Free Mystic page](#).